

# ALDEBARAN<sup>®</sup> DUO COLOR

## SMART LED TECHNOLOGY WITH THE REMOTE CONTROL SYSTEM



# ALDEBARAN® DUO COLOR

Our well-being, whether active or relaxed, depends on our biorhythm, controlled by different body hormones. Two hormones - cortisol and melatonin - play an important role. About 10 years ago, studies by the University of Eppendorf on behalf of Philips and Osram proved that different color temperatures control the hormones cortisol and melatonin. A blue receptor in the human eye directs the resulting stimuli.

Our natural biorhythm is coupled to the sun - in the morning there are higher blue tones and we are awake until the relaxing sunset with strong reds. Your focus is on the human being? Then the light should also correspond to its biological rhythm.

The **ALDEBARAN® DUO COLOR** - for short **ADC®** - gives you the possibility to set the right color temperature according to your requirements with a wiping.

**ADC® operates with a remote control system of 3,000-6,000 K. This means in practice: from cold-white to warm-white.**

stepless dimming function  
switchable via hand sensor

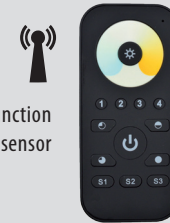
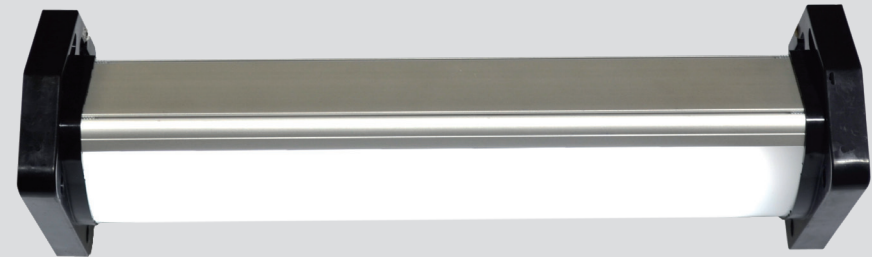


Fig. similar



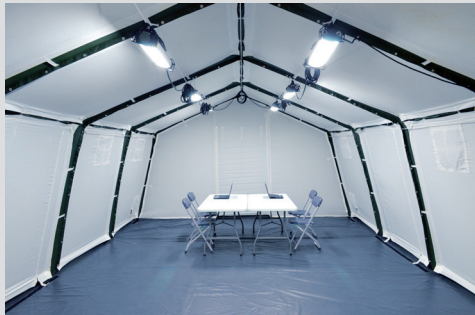
## OUR ADC® SYSTEM

is currently designed for tents of up to 80m<sup>2</sup>. The system is limited only by the range of the handsensor of max. 20 meters action radius. This system works without problems in medium-sized and room systems. The number of luminaires to be operated is unlimited. **ALDEBARAN® DUO COLOR** is infinitely adjustable - from the computer workplace to the comfort oasis - there is nothing in the way of the light.

**Our smart LED technology is not only energetic at the highest level, but also the light quality and intensity leave nothing to be desired.**

## CONCENTRATION PHASE

For example, if you need to use your laptop or to work at full concentration, then we need our body hormone cortisol. From **6000 K (cold white)** color temperature of the light, cortisol is available 100% in our body, just like in an early morning.



## RELAXATION PHASE

Break times, in turn, are recreational times, in which one is strengthened in a brief resting phase for the next challenges. Mix the color temperature to e.g. **4500 K (neutral white)**, the cortisol, which keeps us awake, is absorbed in the body by about 50% melatonin, which promotes recovery.



## RESTING PHASE

After work, you should relax. Lower the color temperature to **3000 K (warm white)**, and now 100% of the cortisol is stopped. Pure relaxation ensues, just like with a sunset.



### TECHNICAL DATA . ALDEBARAN® DUO COLOR

|                                |  |
|--------------------------------|--|
| Input voltage                  | 100-230 V AC   |
| Connection line                | H07RN-F 3G1,5, 5m  |
| Power consumption              | 50 W   |
| Luminous flux (REAL Lumen)*    | 3,900 lm   |
| Colour temperature             | 6000 K (cw = cold white)<br>4500 K (nw = cold- and warm white)<br>3000 K (ww = warm white) |
| CRI                            | >84  |
| Life time                      | 50,000 hrs   |
| Housing                        | Aluminium  |
| Screen                         | PMMA (opaque)  |
| End cap                        | Polyphor   |
| Ambient temperature            | -32 °C to +49 °C   |
| Dimensions (LxWxH) approx.     | 565 x 160 x 105 mm   |
| Weight                         | 3,5 kg   |
| Schuko socket (opposite sides) | IP54   |

\*Lumen = Lm / In the „Lumen REAL“ is REAL measured light output quantities.

Item no.:1417182903



INCL. ALDEBARAN® DUO COLOR

REMOTE:

Range is at 20 meters

Remote: 2.4 GHz

OPTIONAL ACCESSORIES:

Smart-Wireless-Controller (Wall switch), Nylon Fixing Strap

Video



Note

We also provide solutions for large event tents. Please contact us for further details.

**SETOLITE** Lichttechnik GmbH

Bockhackerstr. 13

42499 Hückeswagen

Germany

Tel.: +49 (0) 21 92 - 9 36 24-0

Fax.: +49 (0) 21 92 - 9 36 24-25

E-mail: [info@setolite.com](mailto:info@setolite.com)

Internet: [setolite.com](http://setolite.com)



[facebook.com/setolite](https://www.facebook.com/setolite)

