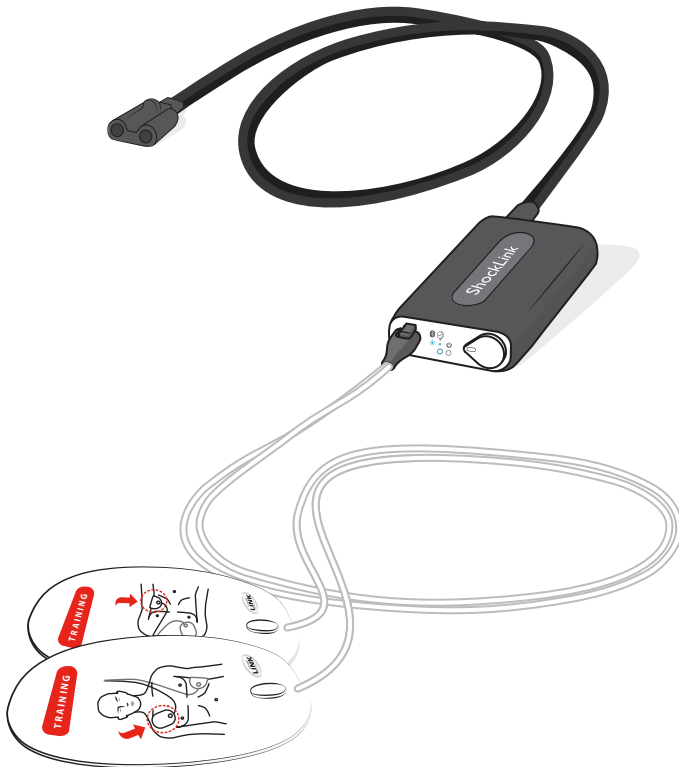


# ShockLink

## User Guide



## Intended Use

ShockLink enables the connection of compatible live defibrillators to ShockLink prepared training manikins and Patient Simulators, creating more realistic Basic Life Support (BLS) and Advanced Cardiac Life Support (ACLS) defibrillation training.

Connect ShockLink to training pads and a compatible defibrillator to begin training. The shock energy from a defibrillator is defused in the ShockLink cable.

ShockLink removes the need for specialised defibrillator training manikins and Patient Simulators with chest-studs or a load box to absorb the shock.

Visit [www.laerdal.com/ShockLink](http://www.laerdal.com/ShockLink) for more information about ShockLink, ShockLink Technology and for Spare Parts and Accessories.

## Items Included



ShockLink



1 x AAA battery



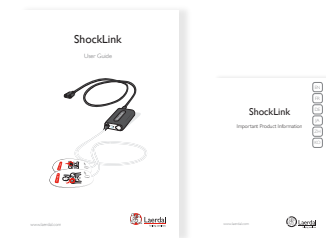
Pouch



Remote Control ShockLink



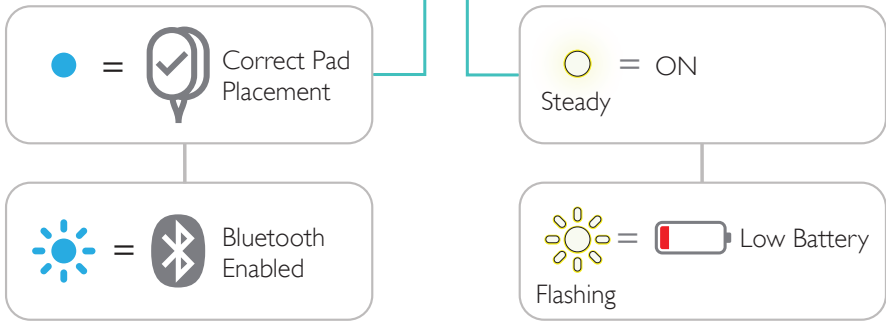
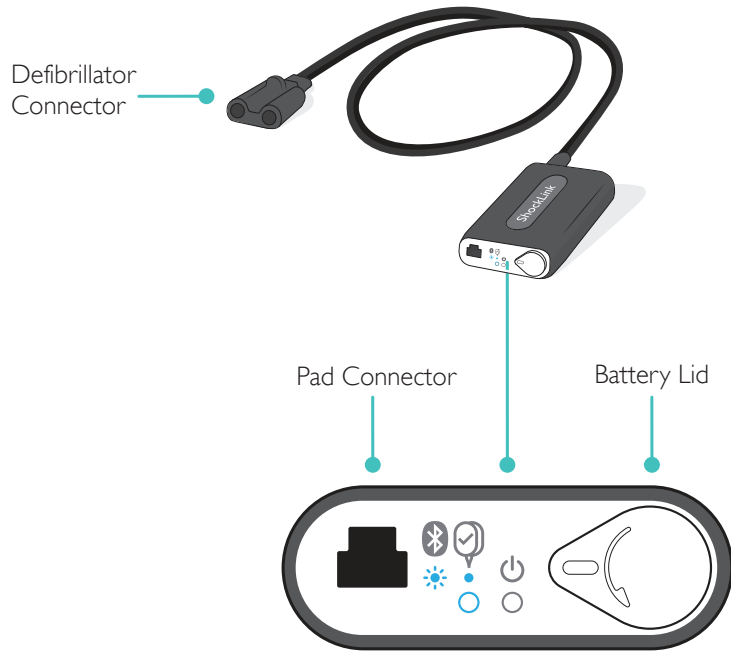
Training Pads



User Guide Important Product Information



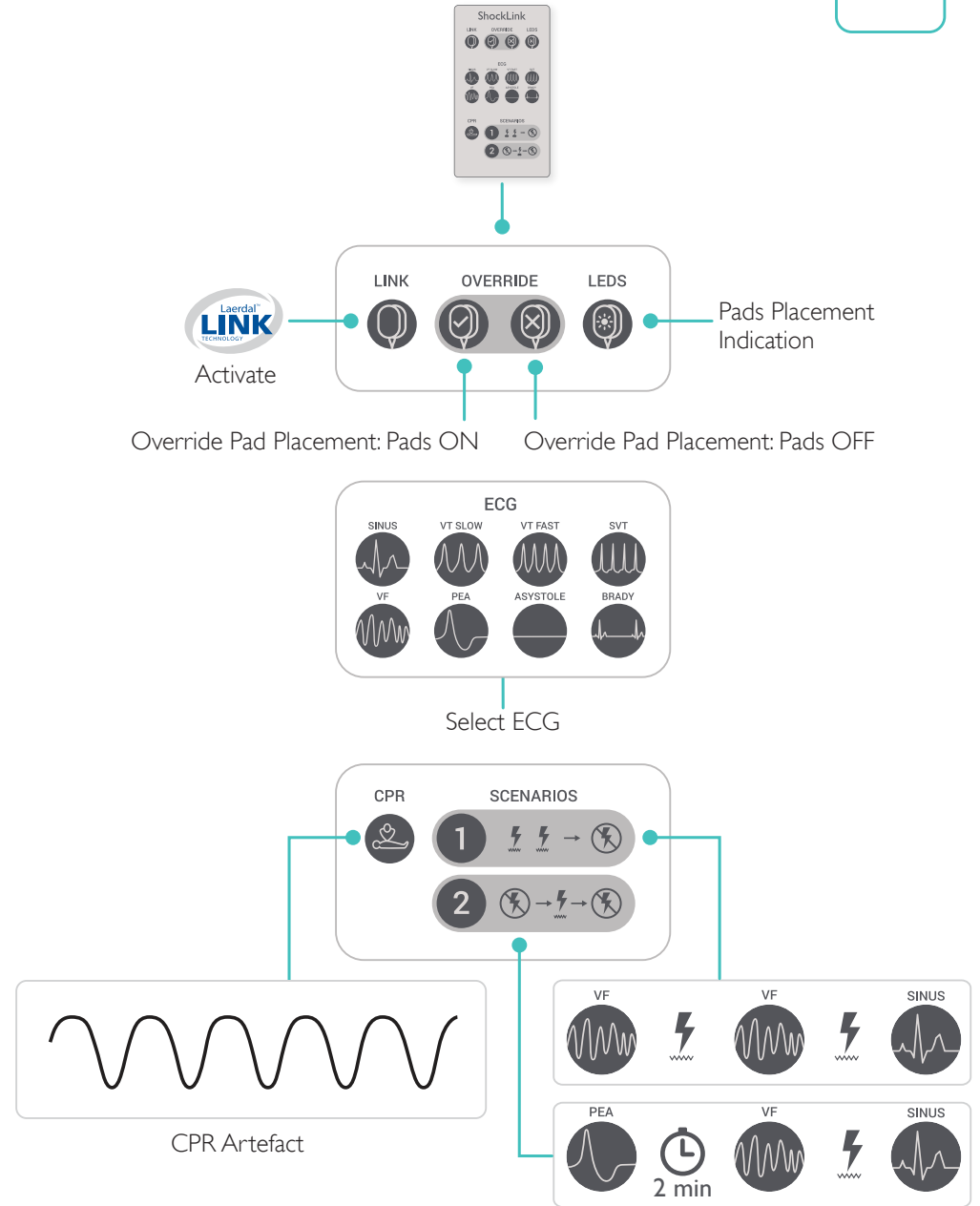
# Overview - ShockLink



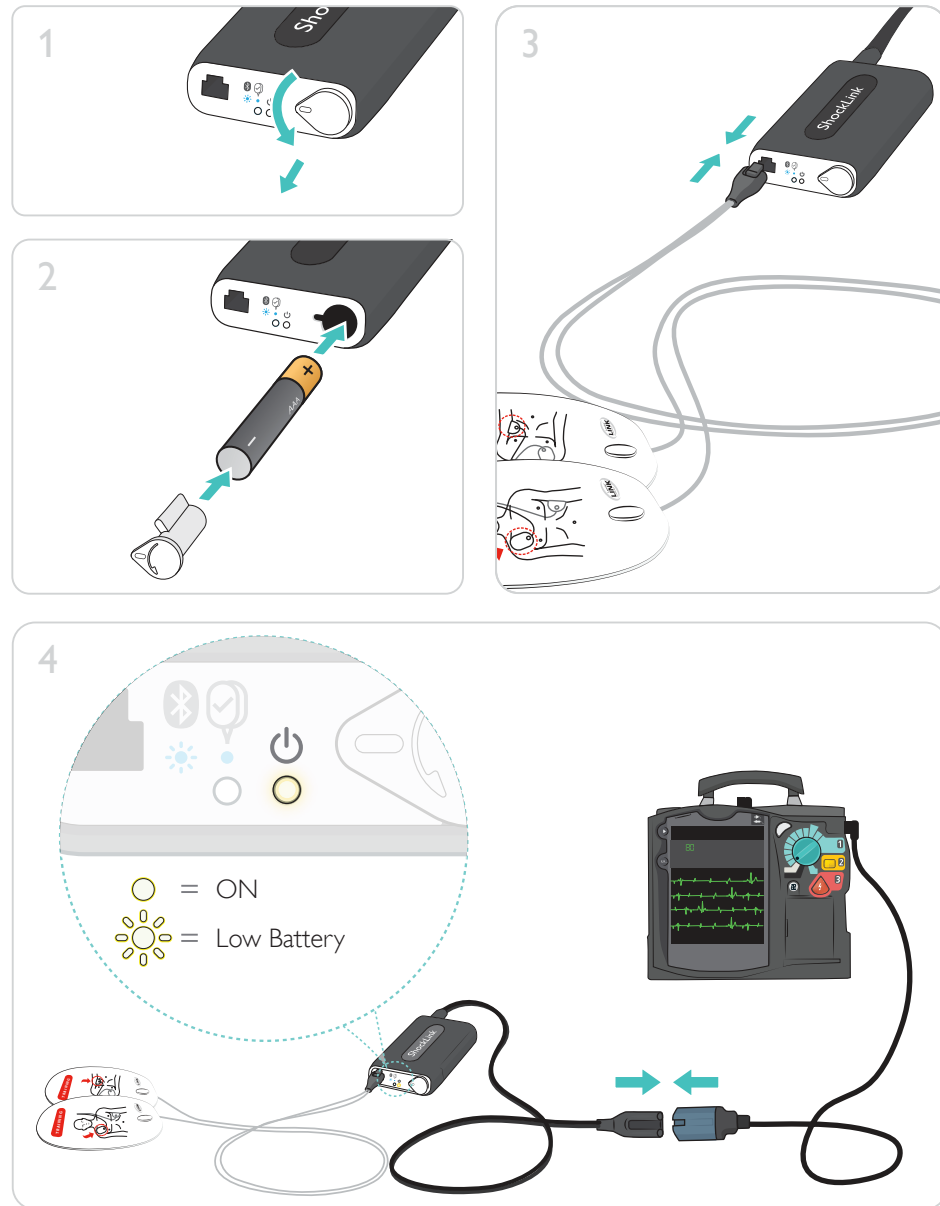
**Note**  
For more information regarding compatibility with defibrillators other than a Philips defibrillator, visit [www.laerdal.com/ShockLink](http://www.laerdal.com/ShockLink).



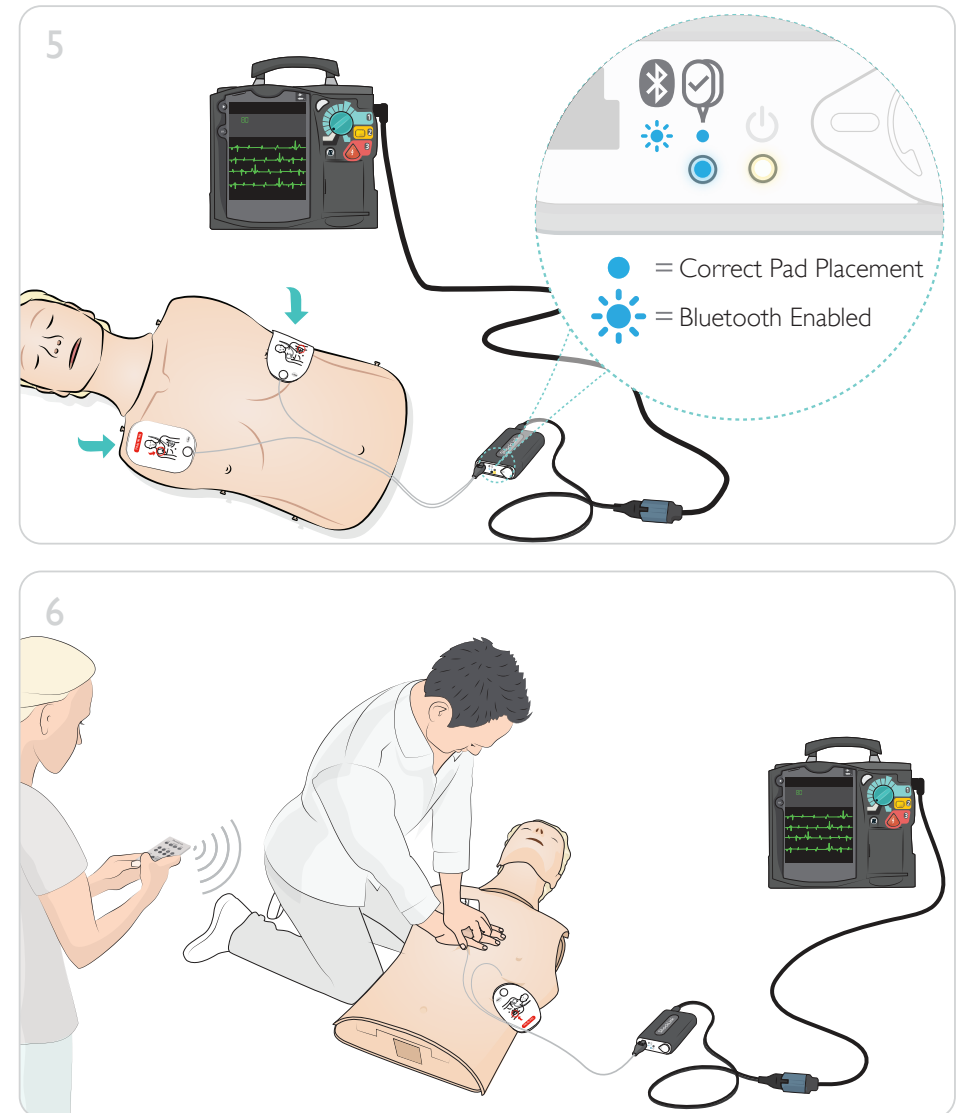
# Overview - Remote Control



**Note**  
Laerdal LINK Technology detects correct pad placement automatically.



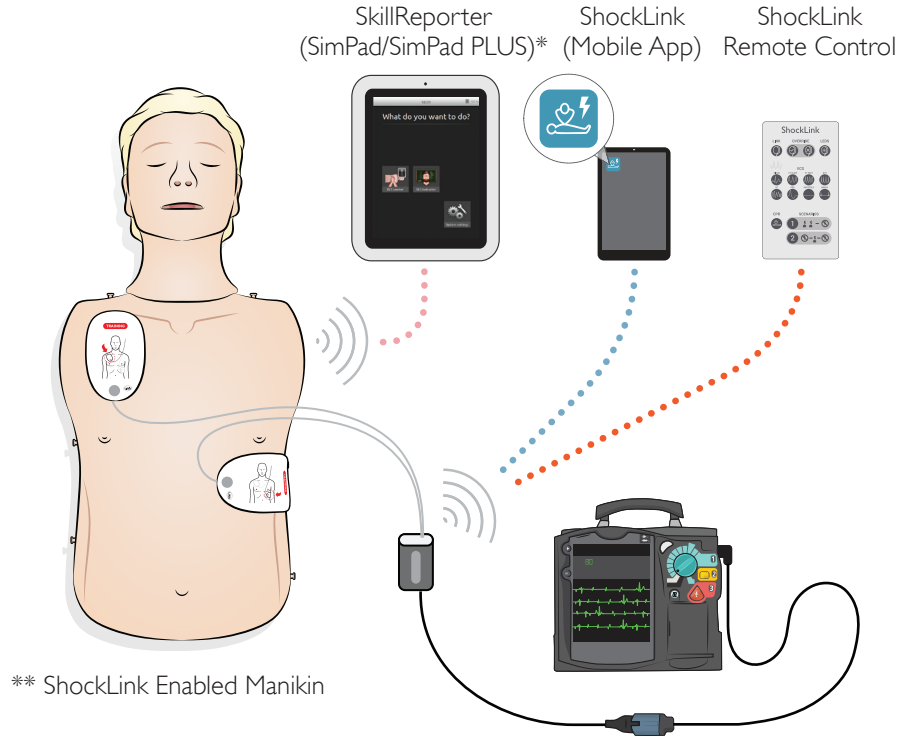
**Note**  
ShockLink is automatically turned on when the defibrillator is turned on.



**Notes**

- To reset the ShockLink device, remove the battery and reinsert after 5 seconds.
- Remove training pads immediately after use to prevent adhesive residue on the manikin chest skin.

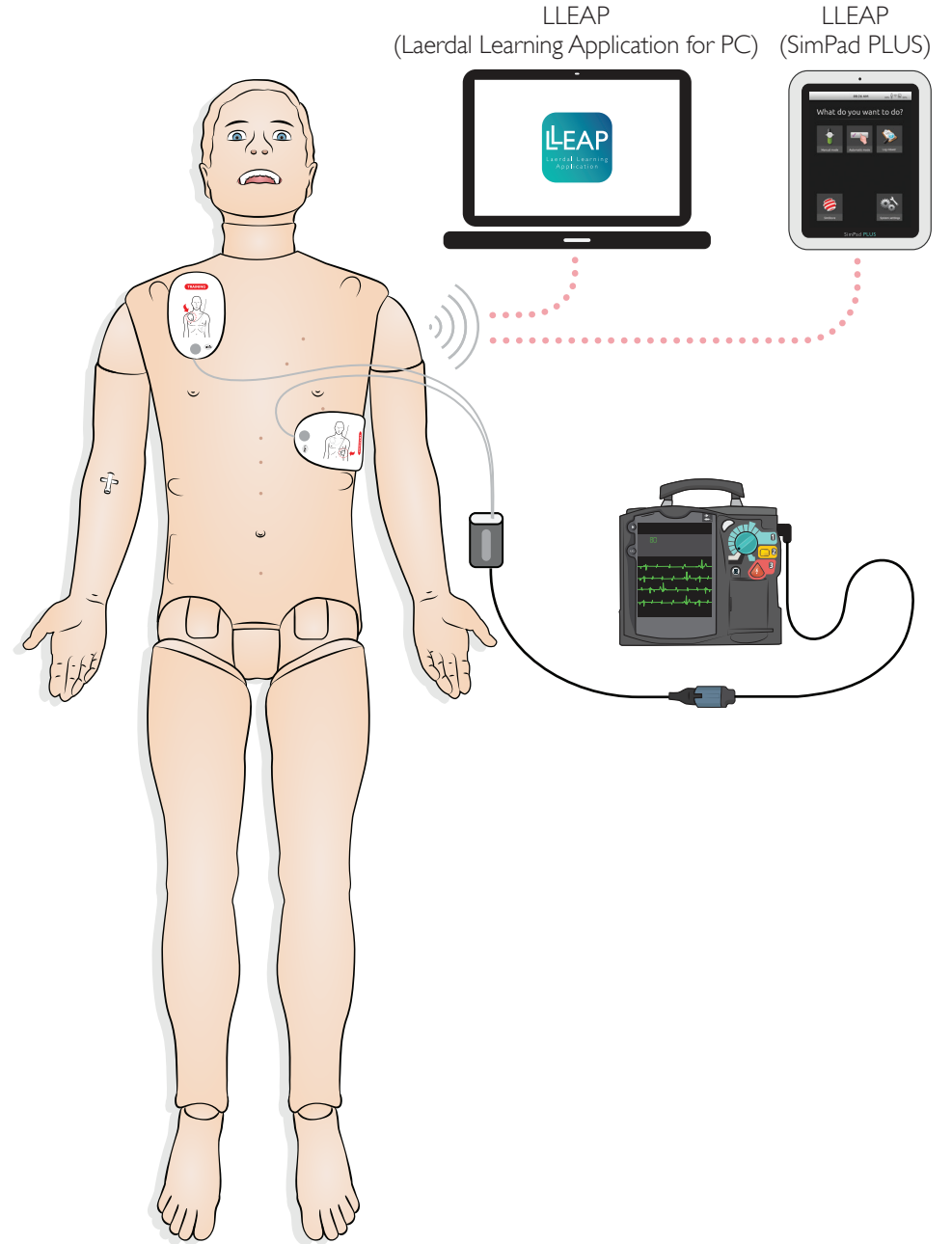
Select one of the following control options:



- ..... WiFi
- ..... Bluetooth
- ..... Infra Red

\* SkillReporter communicates with ShockLink via the manikin after correct pad placement has been detected.

\*\* Visit [www.laerdal.com/ShockLink](http://www.laerdal.com/ShockLink) for compatible Manikins and Simulators.





© 2016 Laerdal Medical AS. All rights reserved.

Manufacturer: Laerdal Medical AS  
P.O. Box 377  
Tanke Svilandsgate 30, 4002 Stavanger, Norway  
T: (+47) 51 51 17 00

Printed in China

20-09355 Rev B

[www.laerdal.com](http://www.laerdal.com)



**Laerdal**  
helping save lives